

Bledlow-cum-Saunderton Profile

Draft - August 2015

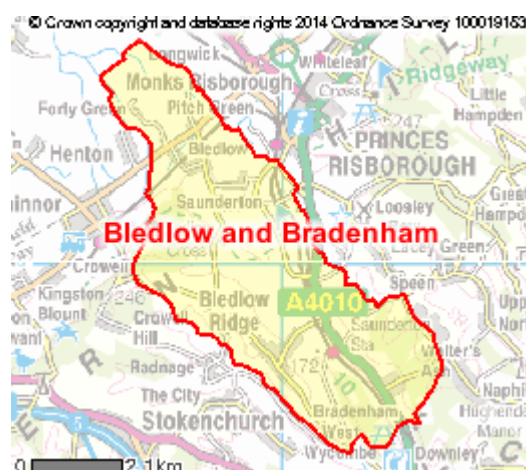
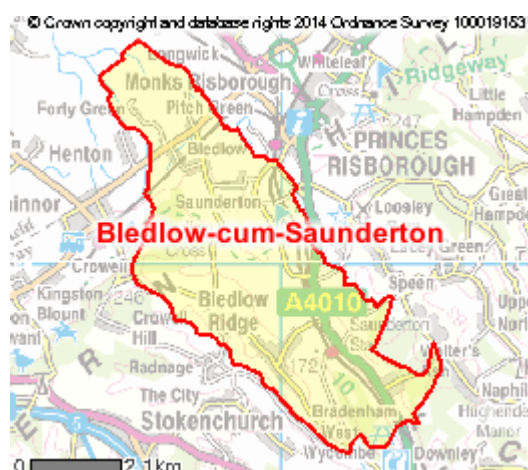


Contents

Section	Title	Page number
1.	Overview	3
2.	History	4
3.	Previous Developments	6
4.	Housing schemes proposed by developers	8
6.	Demographic	9
7.	Employment	11
8.	Social	14
9.	Housing	17
10.	Public Transport	18
4.	Policies and Constraints	20
5.	Technical Appendices	21

Note – Parish/Ward Issues:

Where possible, the data found in this pack are based on the Bledlow-cum-Saunderton parish data – however, as not all the data is collected at parish level, in places it has been necessarily to display data from the Bledlow and Bradenham Ward. Maps of both areas can be seen below, and data will be specified as to what area it represents:



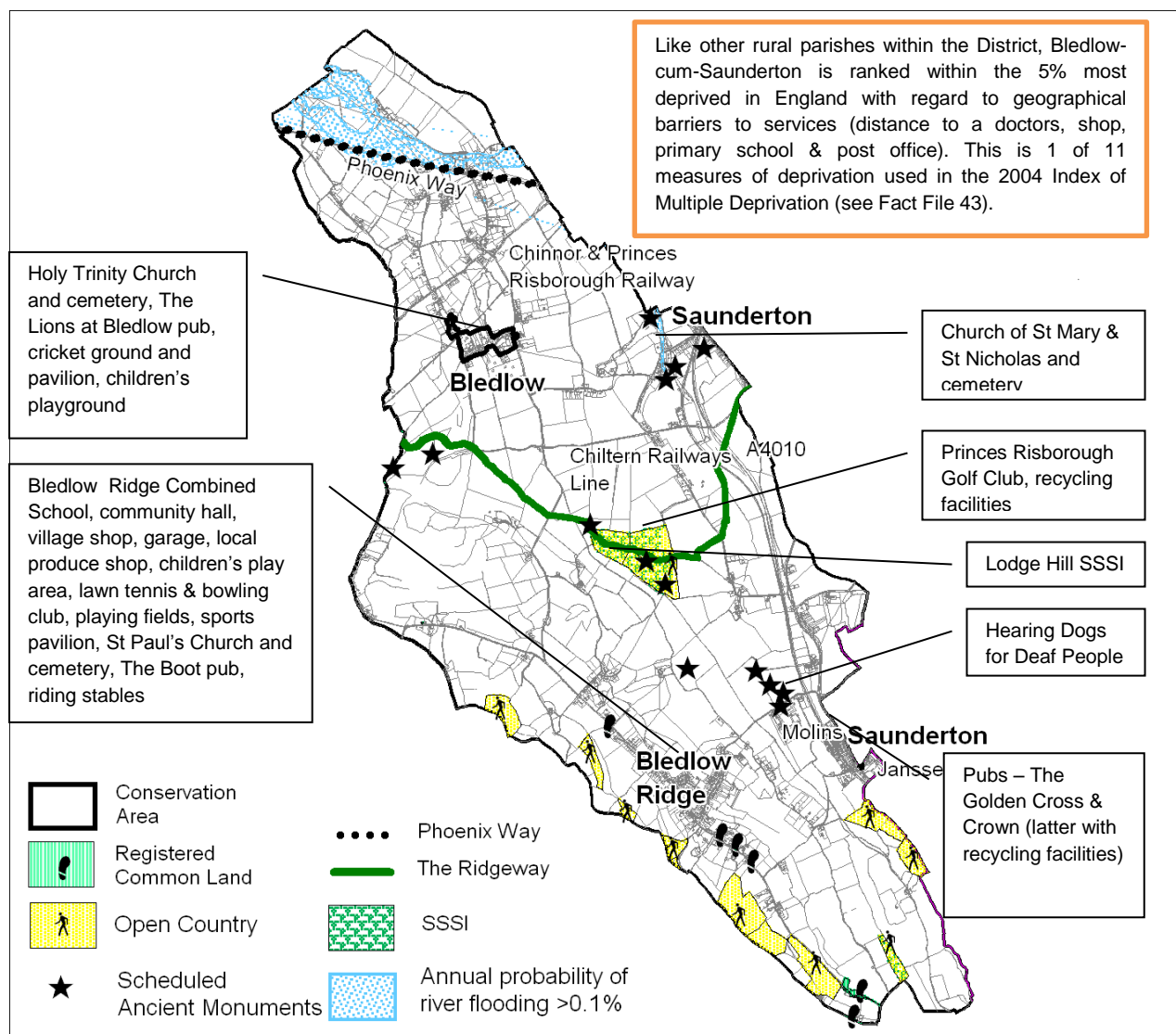
Overview

Bledlow-cum-Saunderton is a large rural parish (total size 2,716.55 hectares) in the north western corner of the District and includes the villages of Bledlow (part of the village is a Conservation Area – see map), Bledlow Ridge and part of Saunderton. The parish has lower-lying land to the north with some of it liable to flooding.

The southern part of the parish is within the Chilterns Area of Outstanding Natural Beauty (30% or 808 hectares) and the Green Belt (47% or 1,281 hectares). The central area of the Parish is particularly rich in ancient history with 14 Scheduled Ancient Monuments. The Princes Risborough and Chinnor Railway (steam and diesel) passes through the village of Bledlow.

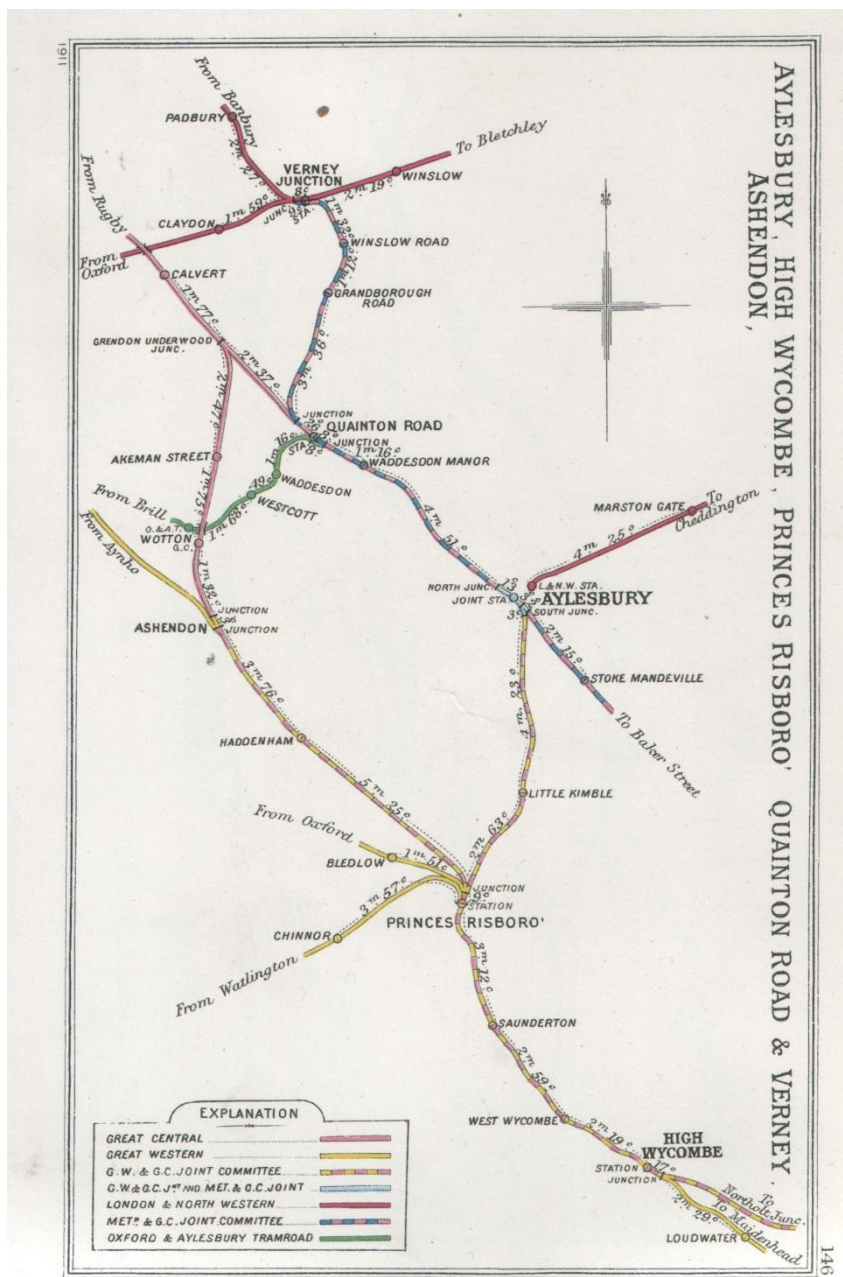
In addition to a network of public footpaths, the Ridgeway long distance footpath and the Thame to Princes Risborough Cycle Route (the Phoenix Way) traverse the Parish. There are also several areas of Open Country and small areas of registered common land, two of which are ponds.

The parish sits within the Bledlow and Bradenham District Ward.



History

The village name is Anglo Saxon in origin, although its original meaning is unclear. It was recorded in the Domesday Book of 1086 as Santesdune, leading some scholars to believe that the village name derives from 'saint's hill'¹. There was a great deal of prehistoric activity in this parish (known as Bledlow-cum-Saunderton), one reason being the presence of the Icknield Way prehistoric track. This is claimed to be the oldest road in Britain extending from the Dorset coast to Norfolk built when the Romans came. A Roman villa known at Church Farm, Saunderton was excavated in the 1930s and a possible Saxon cemetery was found digging a pit on Hemly Hill, Saunderton.



In the 18th century a workhouse was founded in Saunderton, which in the Victorian era became the main workhouse for the union of High Wycombe. There were also several different manors in this parish in the medieval period including Saunderton St Nicholas, situated west of the present church. St Paul's church dates to the nineteenth century and there were quite a few mills in the parish dating back to the eighteenth and nineteenth centuries, which the Saunderton Mill was used to make paper.

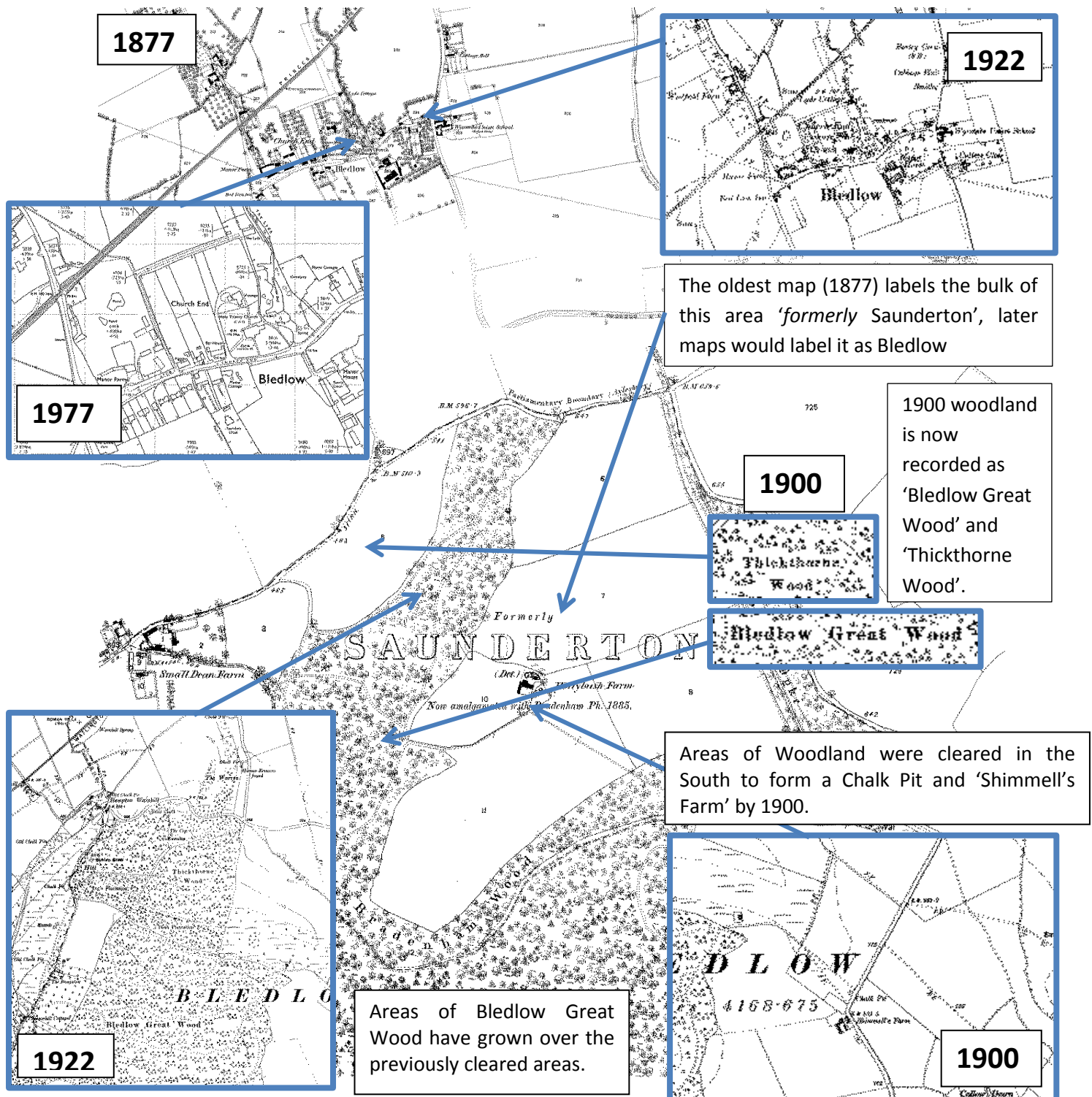
In 1906 The Risborough to Thame railway was opened with a station at Saunderton. A 1911 Railway Clearing House map of railways in and around Princes Risborough shows Saunderton in the rail network (see left)².

¹ <https://ubp.buckscc.gov.uk/SingleResult.aspx?uid=TBC701>

² http://en.wikipedia.org/wiki/File:Aylesbury,_High_Wycombe,_Princes_Risboro,_Quainton_Road_%26_Verney_Ashendon_RJD_146.jpg

Historic Maps

These maps show the transformation of Bledlow-cum-Saunderton over time using County and National maps from 1877-present. The parish has maintained a majority of the open spaces which are now part of the Chilterns Area of Outstanding Natural Beauty (AONB), and have only slightly changed over the years.



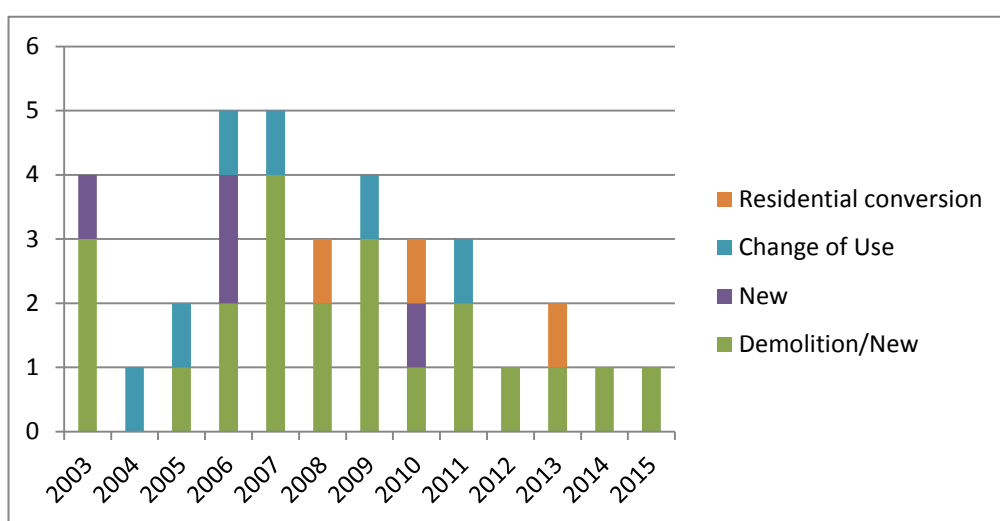
© Landmark Information Group Ltd. (Historical Maps included).

Previous Developments

Development history has been collected using internal Housing and Employment Commitment Monitoring Surveys (HCMS and ECMS respectively). The findings of this survey are presented in the Council's Annual Monitoring Report (AMR). Due to the introduction of this service starting at various times and containing various thresholds, information for Bledlow-cum-Saunderton may not necessarily contain all previous development history, but it does contain all information on record by WDC. **For detailed development history, please see the Technical Appendices at the end of this report.**

Residential Schemes:

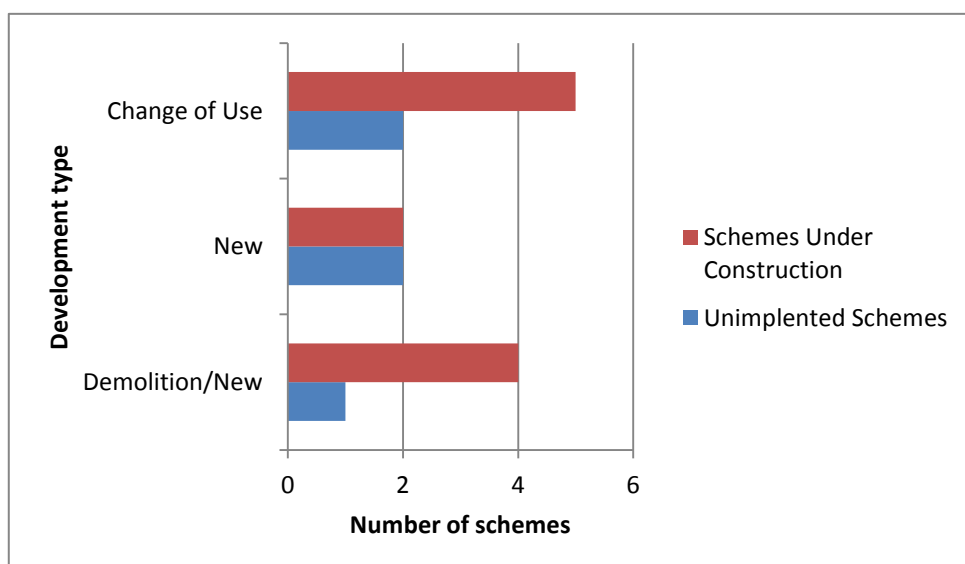
Graph 1: Residential completions since 2003³



Out of the 35 development schemes on record which have been completed, a majority of these were demolitions of existing dwellings and erection of replacement dwellings. The largest residential development was the conversion of The Paper Mill on North Mill Road which converted an outbuilding to 4 houses in August 2004.

There are as of 1st April 2015, 9 schemes under construction - most notably the demolition of Jasmine House, Aylesbury House and outbuildings to allow the construction of 7 dwellings.

Of the unimplemented schemes, the West Yard Industrial estate will provide one of the biggest developments on record, with the demolition of all current buildings and erection of 42 residential dwellings, public space, play space and landscaping.

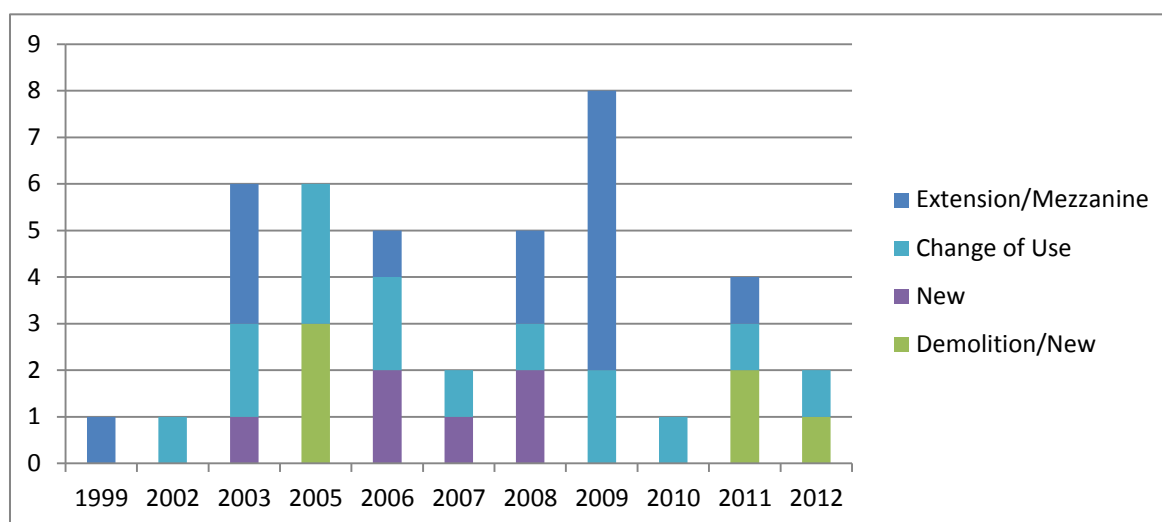


Graph 2: Unimplemented residential schemes and schemes under construction in Bledlow-cum-Saunderton parish as of 1st April 2015⁴

³ HCMS – first recorded completion on WDC records in 2003

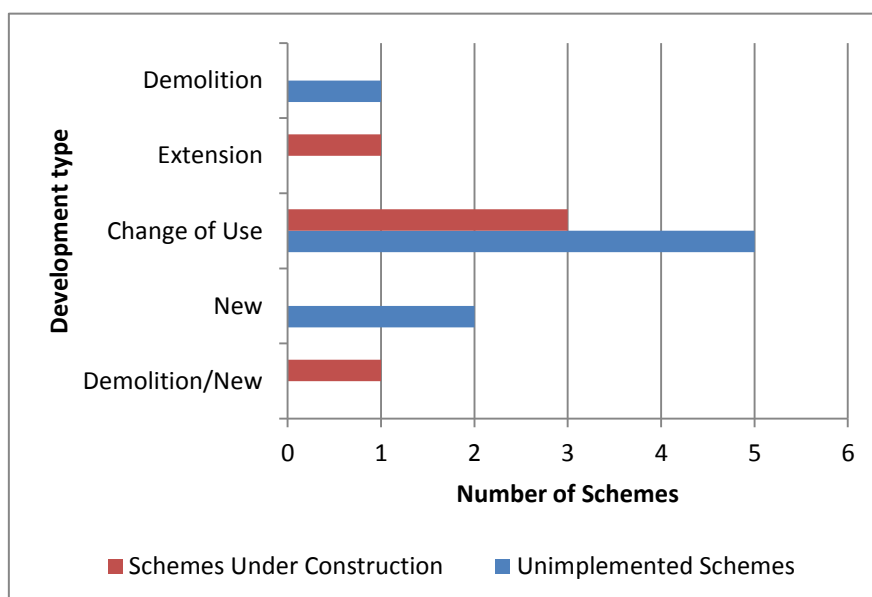
Employment Schemes:

Graph 3: Employment completions since 1999 in Bledlow-cum-Saunderton Parish⁵



There are 42 completed schemes on WDC records, the largest scheme being the replacement of cow housing on **Holly Green Farm** in **Bledlow**, generating **1,242m²** of agricultural floorspace. In terms of losses, the loss of the **Paper Mill** on North Mill Road to 4 dwellings lost 870m² of general industry floorspace, as well as the loss of buildings at **Bird and Tole Ltd** in **Bledlow Ridge** which lost **880m²** of B1c floorspace.

Graph 4: Unimplemented employment schemes and schemes under construction as of 1st April 2015 in Bledlow-cum-Saunderton parish⁶



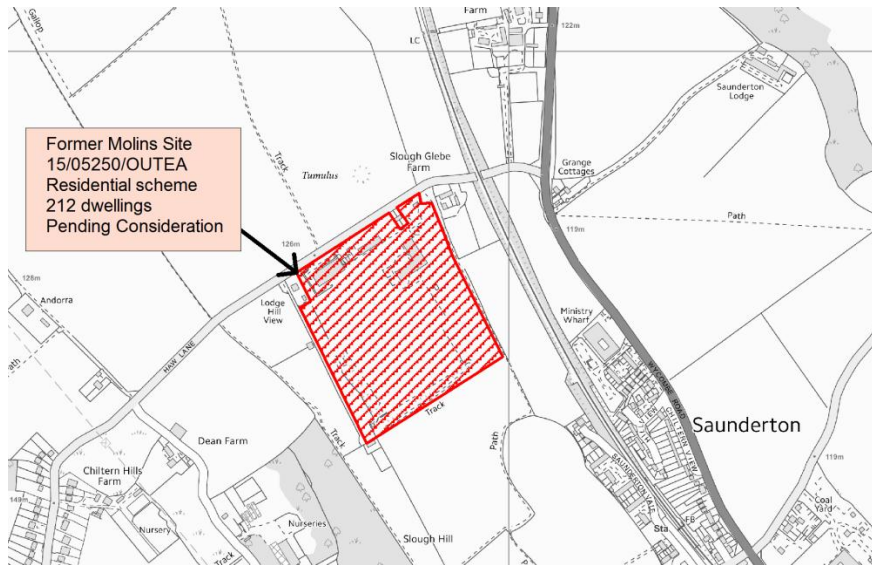
Many of the schemes that have gained permission are for Changes of Use. Large schemes include a new storage building on Holly Green Farm in Bledlow to create 1,042m² of agricultural working space, as well as the loss of West Yard Industrial Estate to housing which result in the loss of 2,860m² of Mixed B use.

⁴ HCMS

⁵ ECMS – First recorded completion on WDC records was 1999

⁶ ECMS

Housing schemes proposed by developers



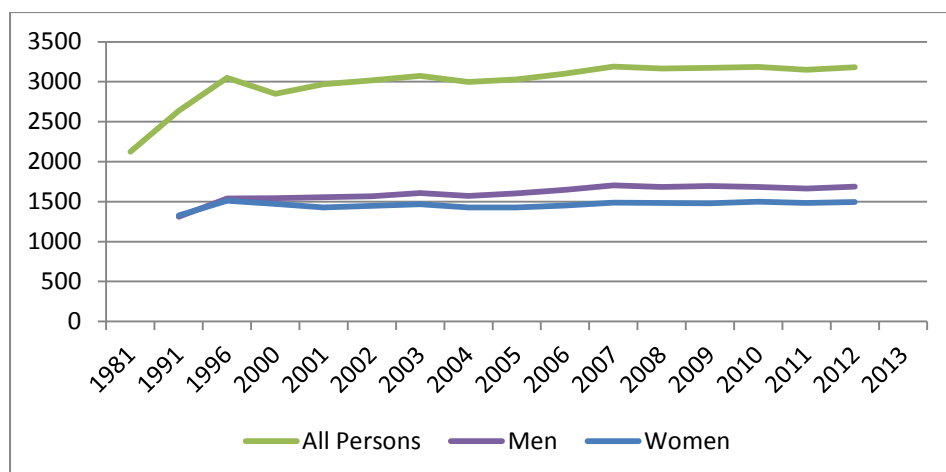
Site: former Molins factory in Saunderton

- The former Molins factory at Saunderton is a Major Developed Site in the Green Belt. It is also within the Chilterns AONB.
- The site has had permission in the past for a data centre, but the permission has expired.
- Currently, there is an application pending consideration for the redevelopment of 25,800 m2 of space for residential use, with a proposal for 212 dwellings.

Demographic data

- Population recorded at 2,469 residents (2011 Census – ward basis)
- Population density 0.8 people per hectare – much lower than 5.3 in the rest of the district⁷
- Most populated age groups are 40-69 year olds, fewer people in the 20-34 age group

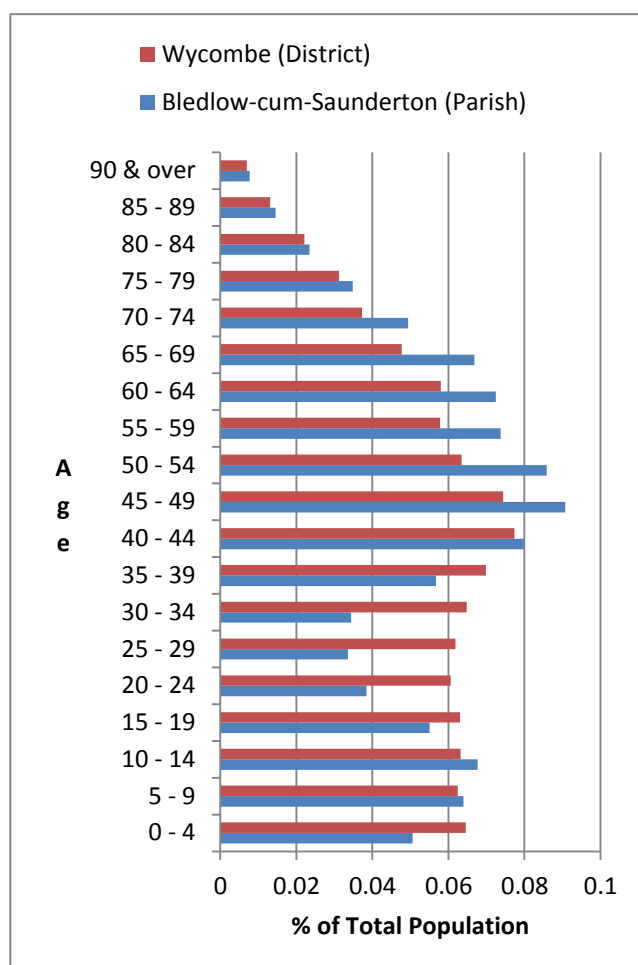
Graph 5: Bledlow and Bradenham Ward population change 1981-2012⁸



Between the 1981 and 2001 census, there was a huge increase of nearly a thousand residents to the Bledlow and Bradenham Ward. Following that rise, population across the Ward has been fairly consistent, with only a gradual increase between the 2001 and 2011 census.

Table 1: Ethnicity in Bledlow-cum-Saunderton (Parish)⁹

Ethnicity	Number (persons)	% Of Parish Population
White British	2,264	92%
White Other	75	3%
Asian Other	31	1.3%
White Irish	17	0.7%
Mixed White/Black Caribbean	16	0.6%
Asian Pakistani	13	0.5%
Mixed Other	12	0.5%
Mixed White/Asian	11	0.4%
Black Caribbean	10	0.4%
Black African	6	0.2%
Asian Indian	4	0.2%
Gypsy/Irish Traveller	2	0.1%
Mixed White/Black African		<0.1%
Other	2	<0.1%
Other Arab	1	<0.1%



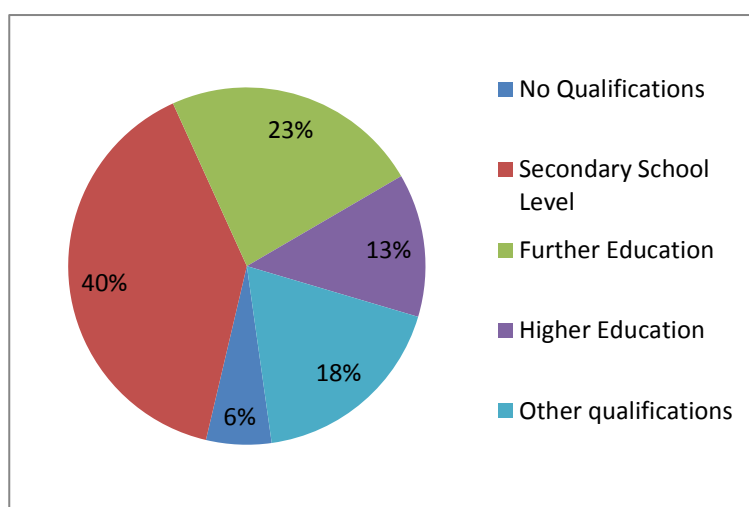
Graph 6 (right): Population structure in Parish and District (2011 census)¹⁰

⁷ 2011 Census – [Population Density \(QS102EW\)](#)

⁸ ONS Census data 1981, 1991, 2001, 2011 and mid-year population estimates by WDC and ONS. [LINK](#)

⁹ 2011 Census – [Ethnic Group \(QS201EW\)](#)

Graph 7: Qualifications obtained in Bledlow-cum-Saunderton and Wycombe¹¹

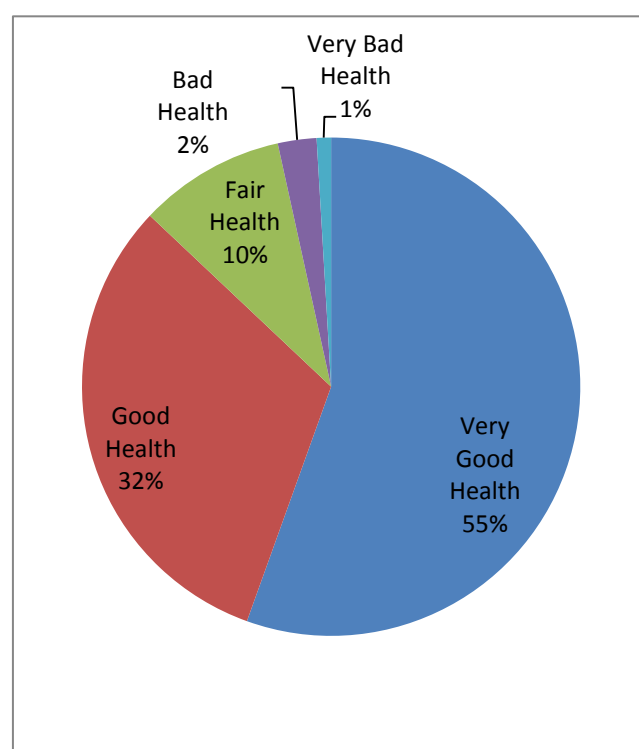


Generally the highest level of qualification is equal to the remainder of the district, with a slightly greater percentage of residents in Bledlow-cum-Saunderton holding NVQ Level 4-5, HNC, HND and Higher Level BTEC qualifications.

Table 2: Religion in Bledlow-cum-Saunderton and Wycombe¹²

	Bledlow-cum-Saunderton (Parish)	%	Wycombe (District)	%
Christian	1,554	63%	98,182	57%
Buddhist	24	1%	913	1%
Hindu	5	0%	2,003	1%
Jewish	7	0%	394	0%
Muslim	16	1%	15,022	9%
Sikh	0	0%	767	0%
Other Religion	10	0%	644	0%
No Religion	664	27%	41,582	24%
Religion Not Stated	189	8%	12,137	7%

Graph 8 (below): General Health in Bledlow-cum-Saunderton¹³



¹⁰ 2011 Census – [Age by Single Year \(QS103EW\)](#)

¹¹ 2011 Census – [Qualifications Gained \(QS502EW\)](#)

¹² 2011 Census – [Religion \(QS208EW\)](#)

¹³ 2011 Census – [General Health \(QS302EW\)](#)

Employment

Graph 9 (below): Economically active population (Census 2011) between Bledlow-cum-Saunderton (Parish) and District¹⁴

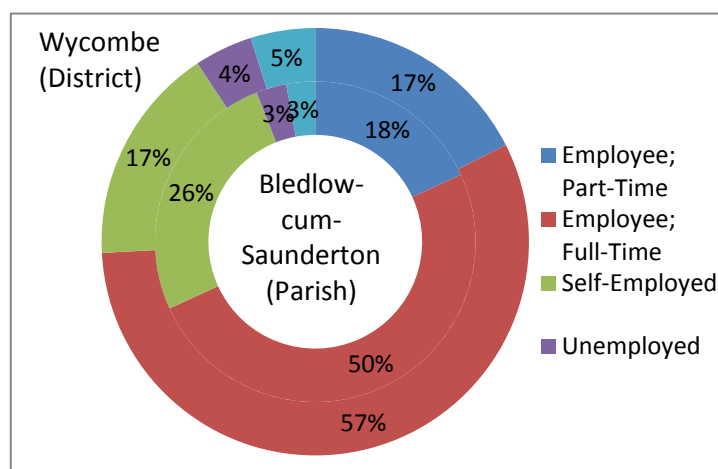
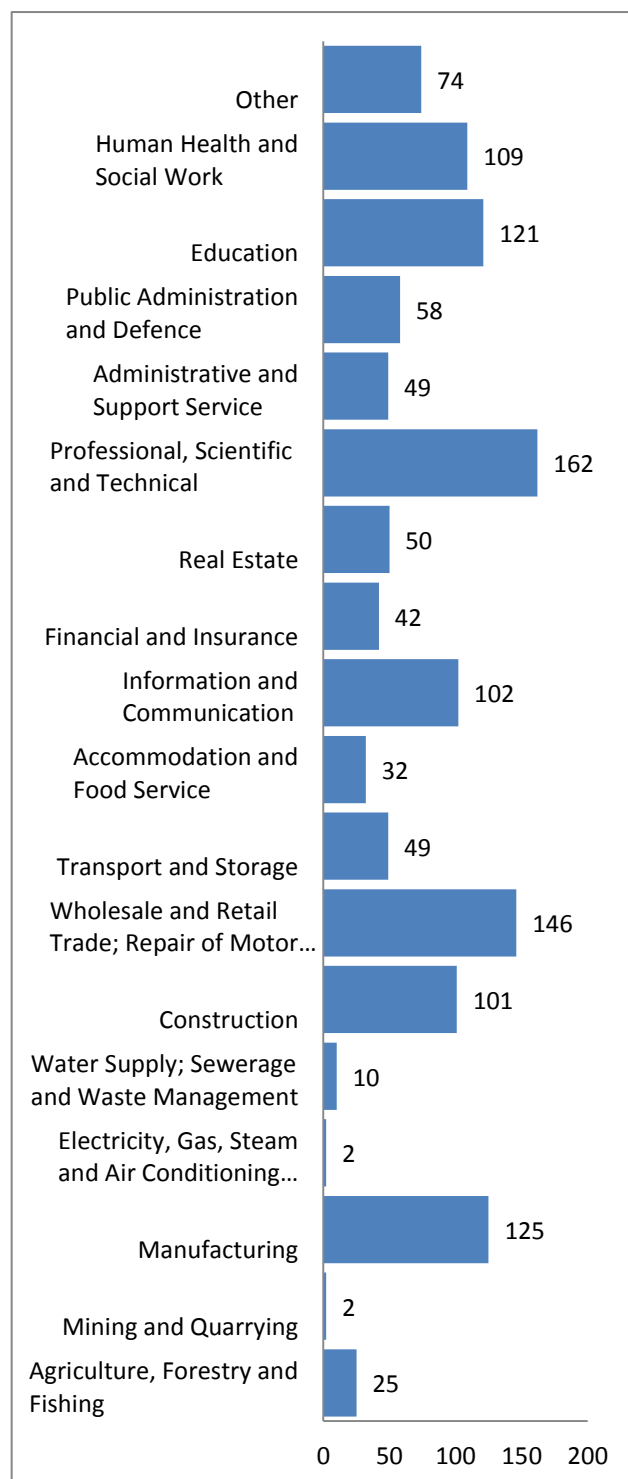


Table 3 (below): Employment by occupational role in Bledlow and Bradenham (Ward) and Wycombe (District)¹⁶

	Bledlow and Bradenham (Ward) (%)	Wycombe (%)
Managers and senior officials	26	14.4
Associate professional & technical	19.9	15
Professional	17.4	19.4
Administrative & secretarial	10.5	11.1
Skilled trades	9.5	10.7
Personal services	6	8.2
Elementary occupations	4.9	7.9
Process plant and machine operatives	3.1	5.4
Sales and customer services	2.7	7.8

The most common occupational role held by residents of the parish are Managers and senior officials (26%), a significant difference to the rest of Wycombe District (14%), the second most popular are associate professional and technical roles, which echo the occupational industry graph to the right.

Graph 10 (below): Occupations of 16-74 year olds in Bledlow-cum-Saunderton¹⁵



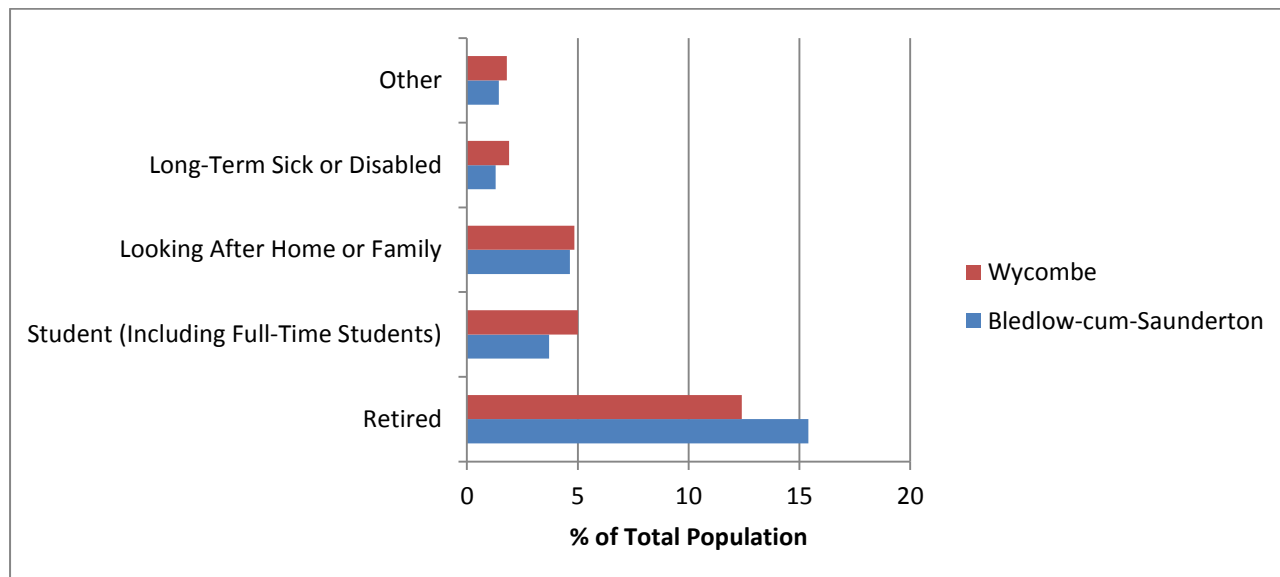
¹⁴ 2011 Census – [Economic Activity \(QS601EW\)](#)

¹⁵ 2011 Census – [Industry \(QS605EW\)](#)

¹⁶ 2011 Census – [Occupation \(KS608EW\)](#)

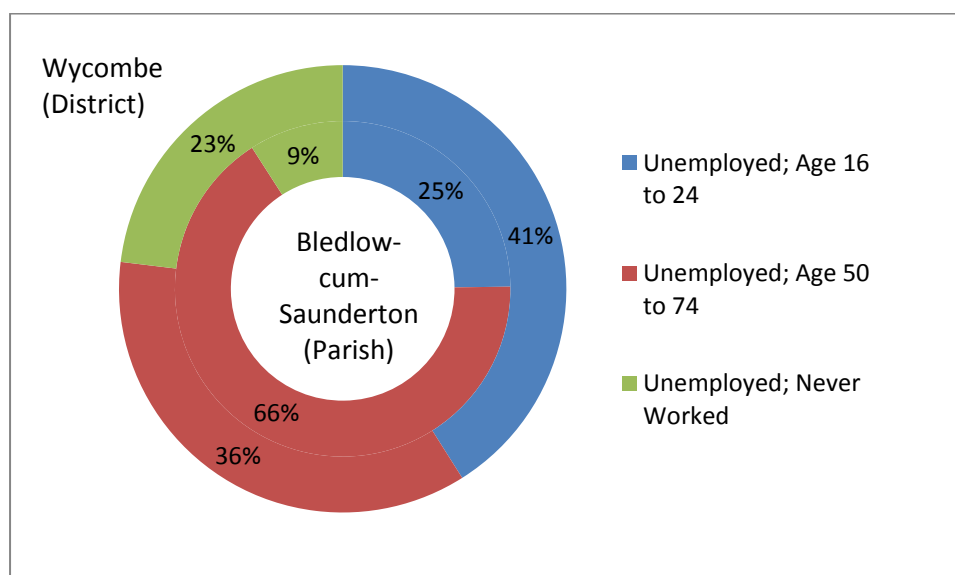
Unemployment:

Graph 11: Economically inactive population (Census 2011) between Bledlow-cum Saunderton (Parish) and Wycombe (District)¹⁷



The largest percentage of economically inactive persons are residents who have retired – in comparison to the rest of the district, this percentage is a lot higher. As seen below, the demographic with the highest rate of unemployment are persons aged 50-74 (66%), in comparison to the rest of the district where persons aged 16-24 make up the majority of the unemployed demographic with 41%.

Graph 12: Unemployed population by age (Census 2011) between Bledlow-cum-Saunderton (Parish) and Wycombe (District)¹⁸



¹⁷ 2011 Census – [Economic Activity \(QS601EW\)](#)

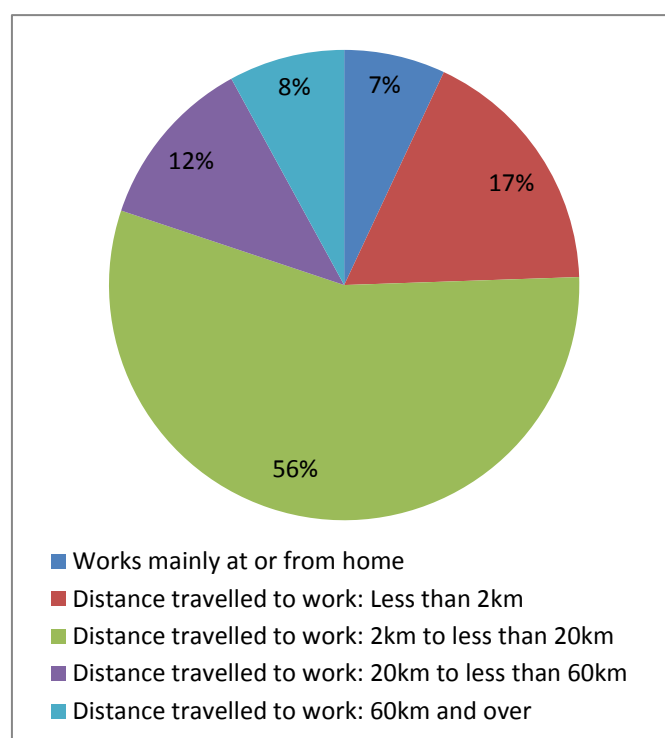
¹⁸ 2011 Census – [Economic Activity \(QS601EW\)](#)

Travel to Work:

Table 4: Mode of transport to work (census 2011) of residents aged 16-74¹⁹

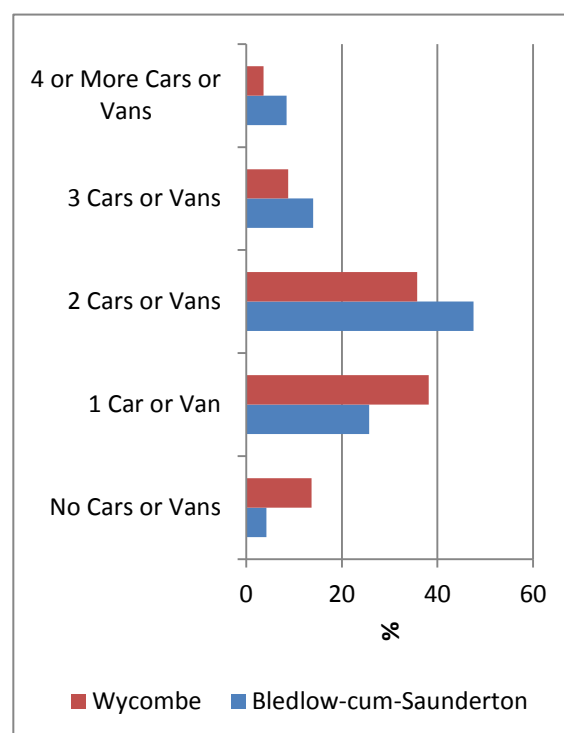
	Bledlow-cum-Saunderton (Parish)	Wycombe (District)
Driving a Car or Van	816	57045
Work Mainly at or From Home	175	6565
Train	116	4339
On Foot	69	8008
Taxi	0	308
Passenger in a Car or Van	46	3893
Bicycle	13	1144
Bus, Minibus or Coach	11	3412
Other Method of Travel to Work	5	489
Underground, Metro, Light Rail, Tram	4	594
Motorcycle, Scooter or Moped	4	553
Not in Employment	527	37838

Considering the accessibility to cars to residents of Bledlow-cum-Saunderton (a majority of households own 2 cars), only 65% of workers travel to work by car. This may be due to 14% of the population working from home, and the easy access to the train station allowing 9% to commute by train.



Graph 14 (above): Distance Travelled to Work - Workplace Population, Bledlow and Bradenham (Ward)²¹

Graph 13 (below): Number of cars or vans in households in Bledlow-cum-Saunderton (Parish) and Wycombe (District)²⁰



¹⁹ 2011 Census – [Method of Travel to Work \(QS701EW\)](#)

²⁰ 2011 Census – [Car or Van Availability \(QS416EW\)](#)

²¹ 2001 Census – [Distance Travelled to Work \(UV80\)](#)

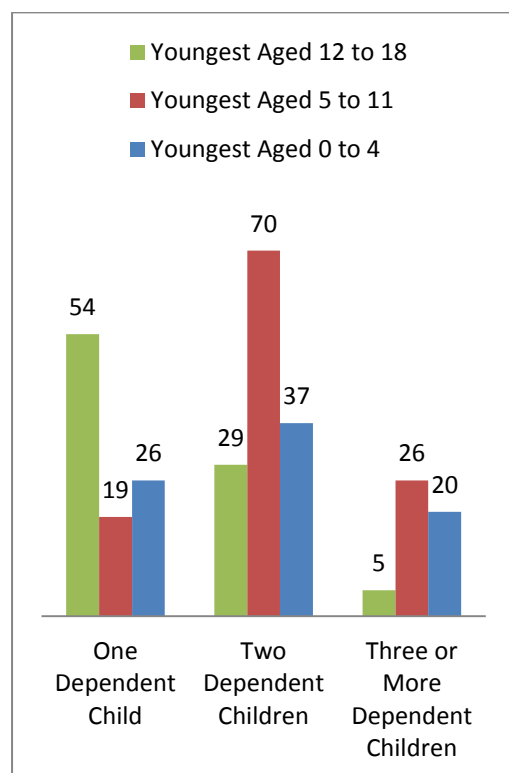
Social

Household:

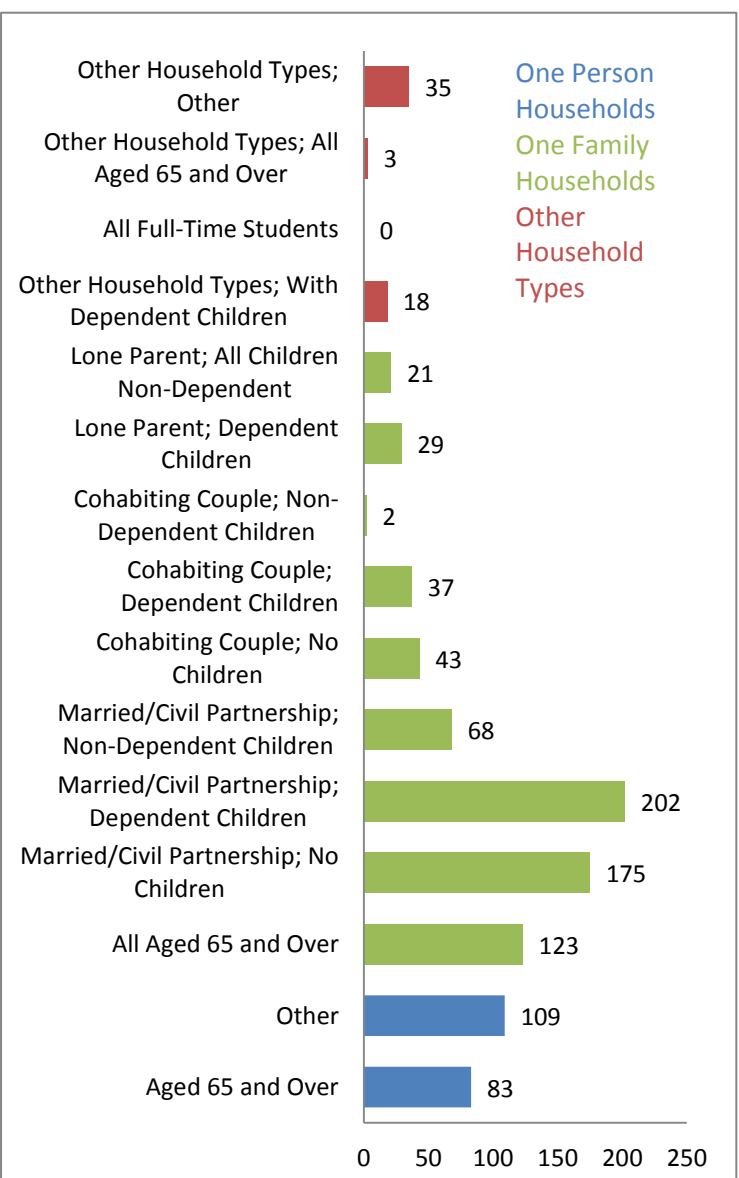
	Bledlow-cum-Saunderton (Parish)	Wycombe (District)
1 Person in Household	20%	27%
2 People in Household	41%	34%
3 People in Household	15%	15%
4 People in Household	16%	15%
5 People in Household	7%	6%
6 People in Household	1%	2%
7 People in Household	0%	1%
8 or More People in Household	0%	0%

Table 5: Household Size in Bledlow-cum-Saunderton (Parish)²²

Graph 15 (below): Families with dependent children in Bledlow-cum-Saunderton (Parish)²³



Graph 16 (right): Household/Family composition in Bledlow-cum-Saunderton (Parish)²⁴



Households within the Parish tend to be smaller, with 41% of households having only 2 people – when the household family composition is broken down, the most common family composition contains either a married couple with or without dependent children. Of these families with dependent children, the most common occurrence are for families with two dependent children aged 5-11. For families with only one dependent child, these children tend to be aged 12-18.

²² 2011 Census – [Household Size \(QS406EW\)](#)

²³ 2011 Census – [Families with Dependent Children \(QS118EW\)](#)

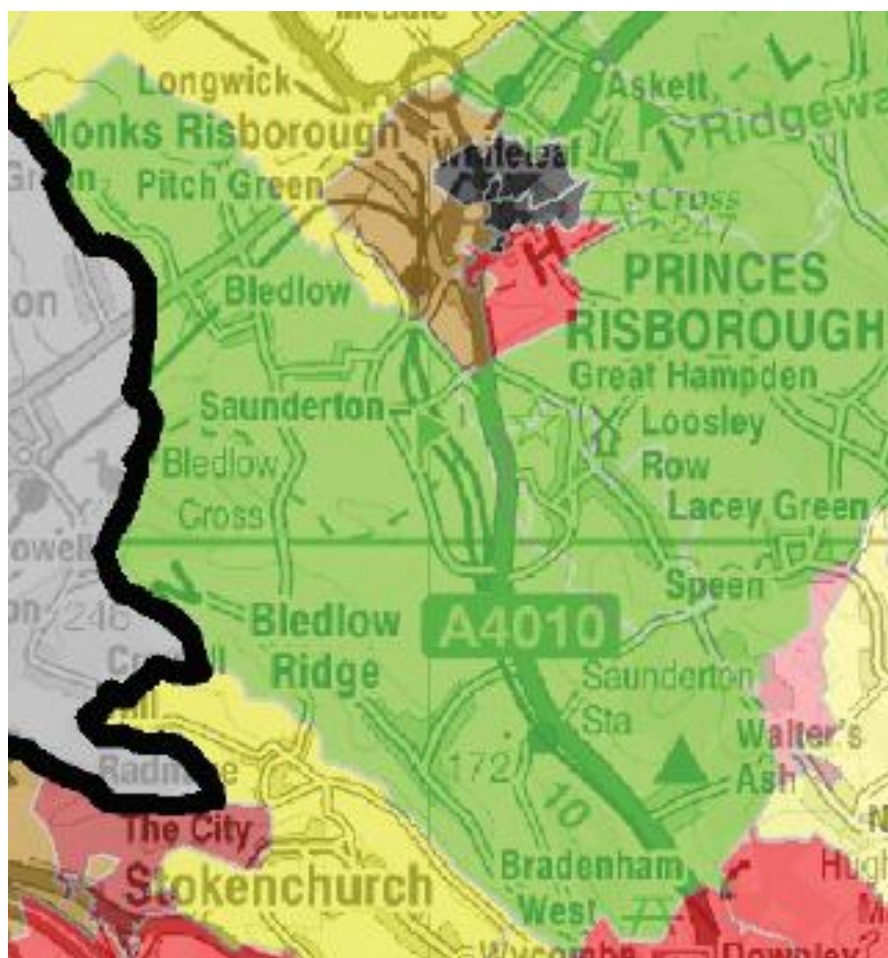
²⁴ 2011 Census – [Household Composition \(QS112EW\)](#)

Deprivation:

Bucks ACORN (**A** Classification **O**f **R**esidential **N**eighbourhoods) is a classification scheme of determining the economic deprivation of various areas in Buckinghamshire. To find more information please see the full study [here](#).

Each group has been compiled by analysing significant social factors, affluence and behaviour to provide an in-depth understanding of the different groups of residents in Buckinghamshire, structured in order of relative affluence.

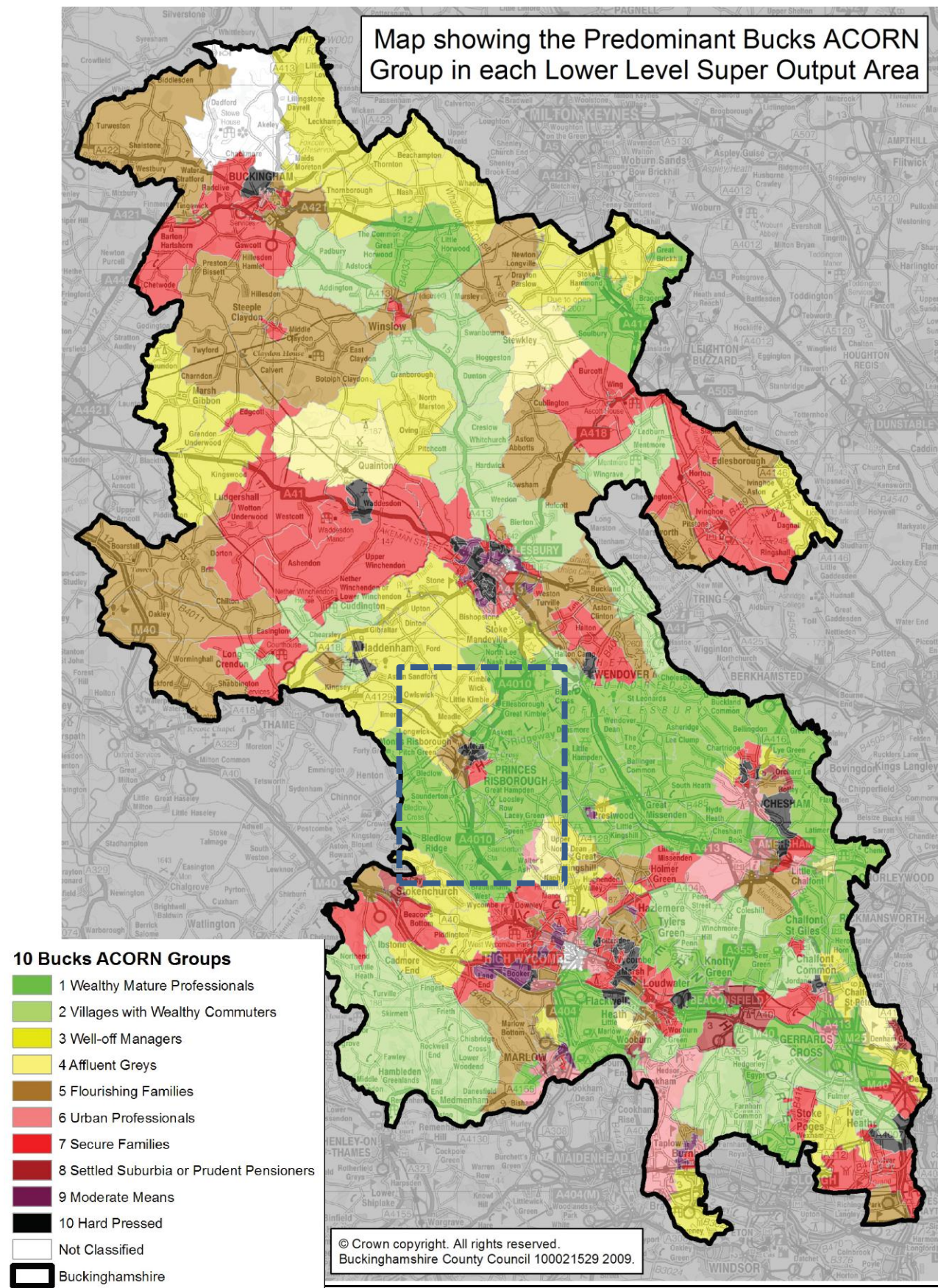
Map: Bucks ACORN Bledlow-cum-Saunderton (May, 2009)²⁵



Wealthy Mature Professionals – “The household income of this group is extremely high and people from this group live in the very least deprived areas of Buckinghamshire and England. Their affluence and middle aged family profile may be linked to the importance they place on further education and secondary school education, where there is a strong engagement to attain qualifications. Public and private transport is important, with higher rates of car ownership and commuting by train/tube, but people are also more likely to work from home. People are less satisfied with transport issues than average. Interest in charity work is higher than average, as is their interest in health care, but lifestyle choices can be poor.”

²⁵ <http://www.buckscc.gov.uk/media/601190/knowning-bucks-residents-4.pdf>

Map: Full Bucks ACORN map (May, 2009)²⁶

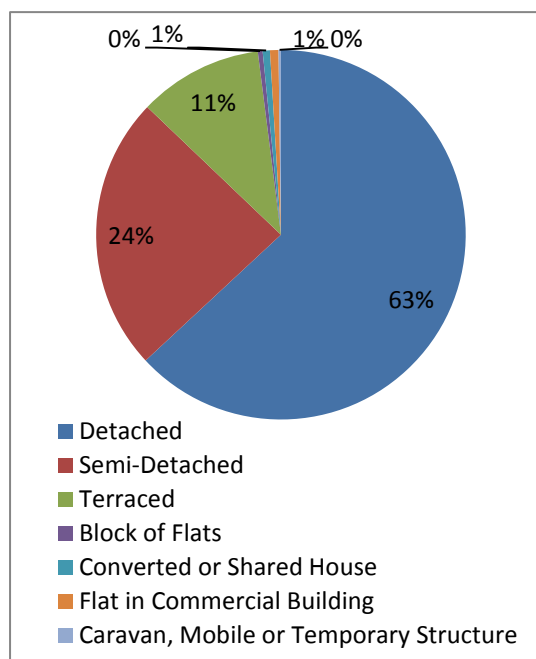


²⁶ <http://www.buckscc.gov.uk/media/601190/knowning-bucks-residents-4.pdf>

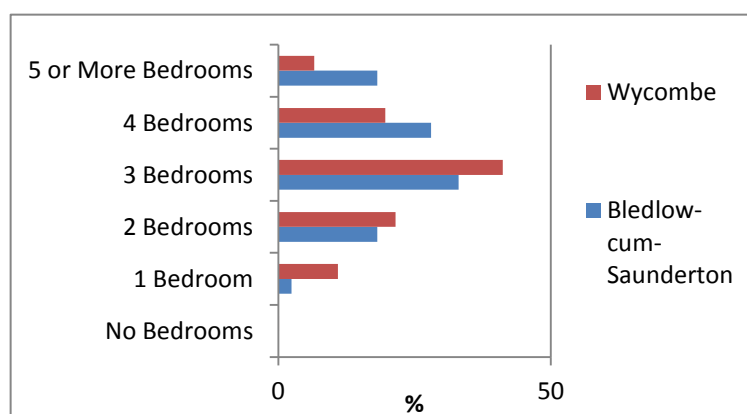
Housing

Household Type:

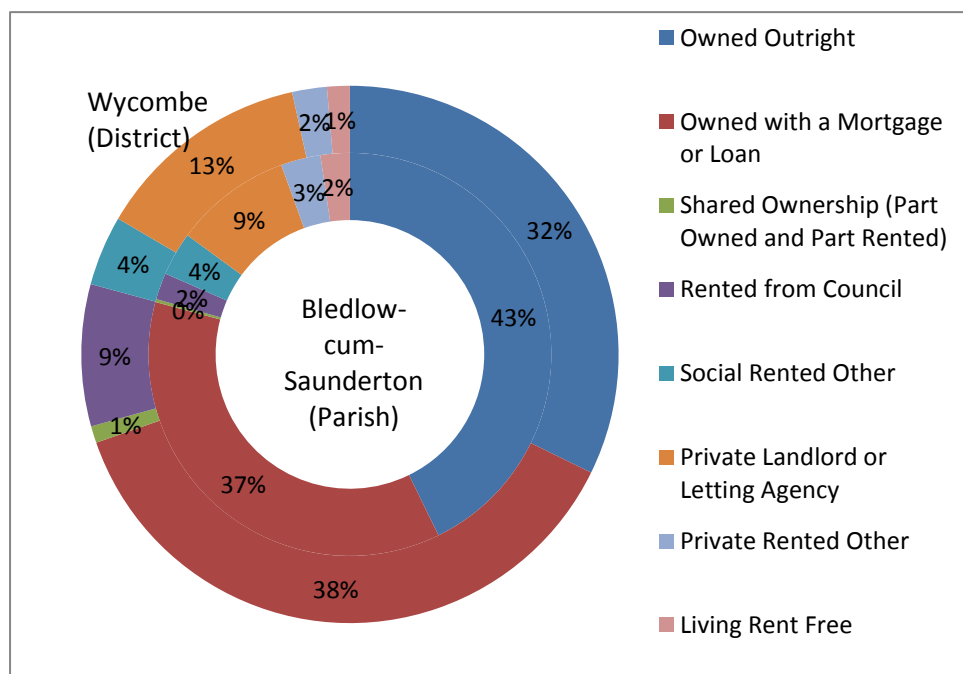
Graph 17: Household types in Bledlow-cum-Saunderton (Parish)²⁷



The most common house type within the parish is detached property with 3 bedrooms, with 43% of total residents owning their property outright.



Graph 18 (above): Number of bedrooms²⁸



Graph 19 (left):
Tenure (%)
comparison
between
Bledlow-cum-
Saunderton
(Parish) and
Wycombe
(District)²⁹

²⁷ 2011 Census – [Accommodation Type \(Households\) \(QS402EW\)](#)

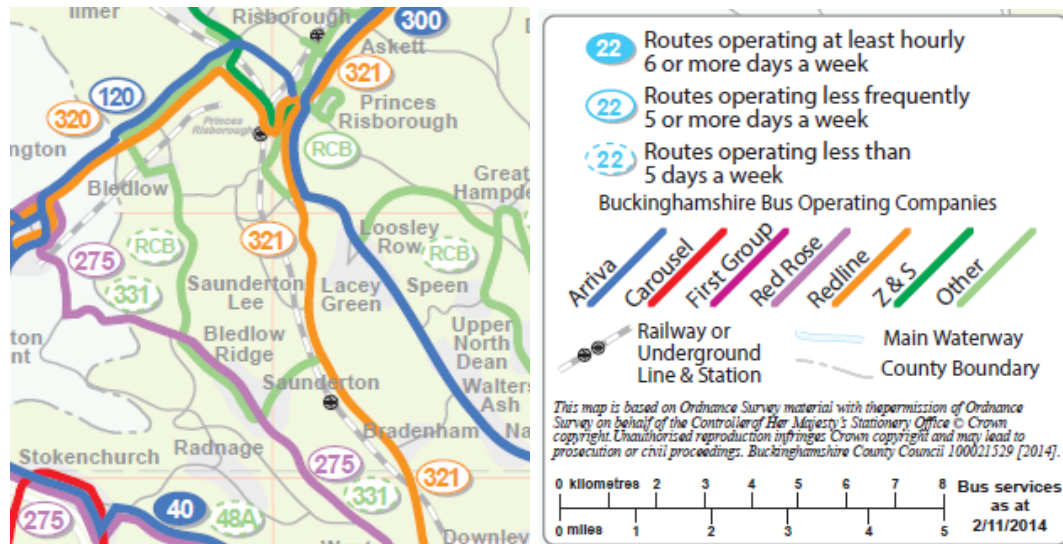
²⁸ 2011 Census – [Number of Bedrooms \(QS411EW\)](#)

²⁹ 2011 Census – [Tenure \(KS402EW\)](#)

Public Transport

Buses:

Map: Bus Network around Bledlow-cum-Saunderton³⁰



Route: (321) Aylesbury - Princes Risborough - Saunderton - High Wycombe

Frequency: Every 1-2 hours until from early morning until early evening.

Railway:

Map: Chilterns Railway Network 2008/09³¹



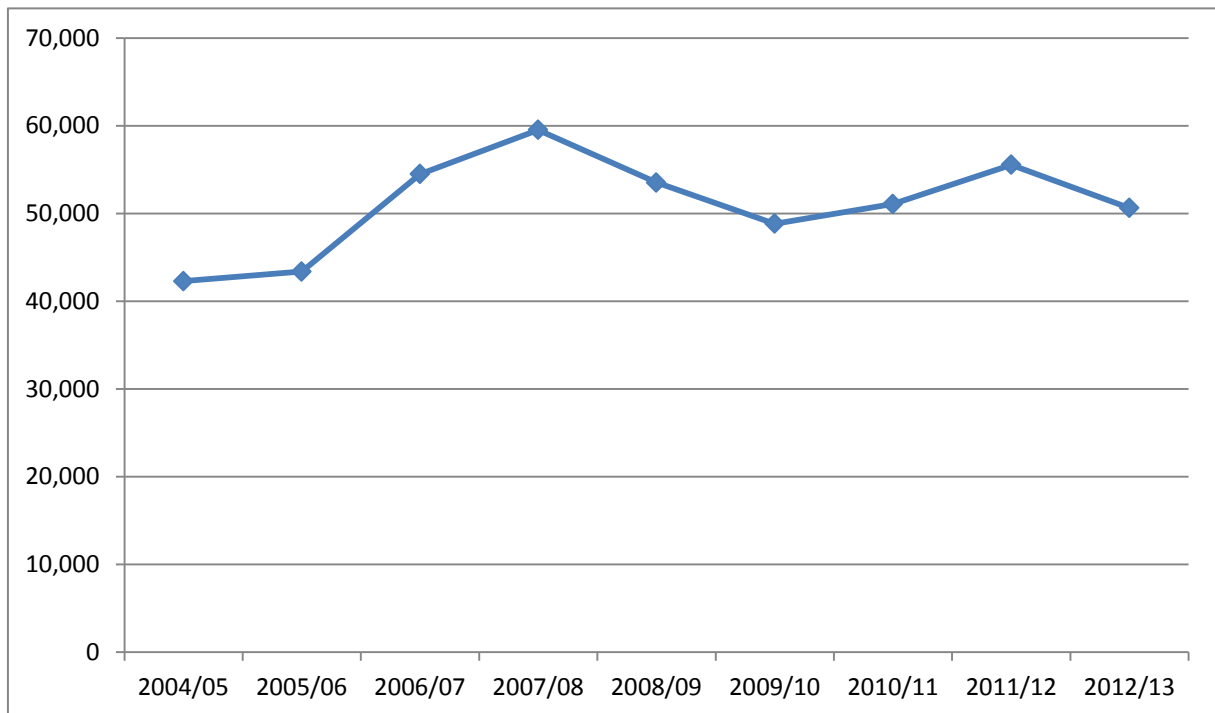
Saunderton railway station is located on the A4010 road between High Wycombe and Princes Risborough. It is near the villages of Bledlow Ridge and Bradenham. Confusingly, the station is about 2.5 miles (4 km) south of the village of Saunderton after which it is named. The hamlet immediately around the station is also known locally as Saunderton, but is not named on maps.

The station is on the Chiltern Main Line between High Wycombe and Princes Risborough stations. Opened 1 July 1901.

³⁰ <http://www.transportforbucks.net/Buses-and-trains/Maps/County-map.aspx>

³¹ <http://www.projectmapping.co.uk/Reviews/Resources/Chiltern%202007-2008.pdf>

Graph 22: Annual rail passenger usage at Saunderton train station (2014)³²



Routes:

- Aylesbury - Little Kimble – Monks Risborough – Princes Risborough – Saunderton
- London Marylebone – Gerrards Cross – Seer Green – Beaconsfield – High Wycombe - Saunderton

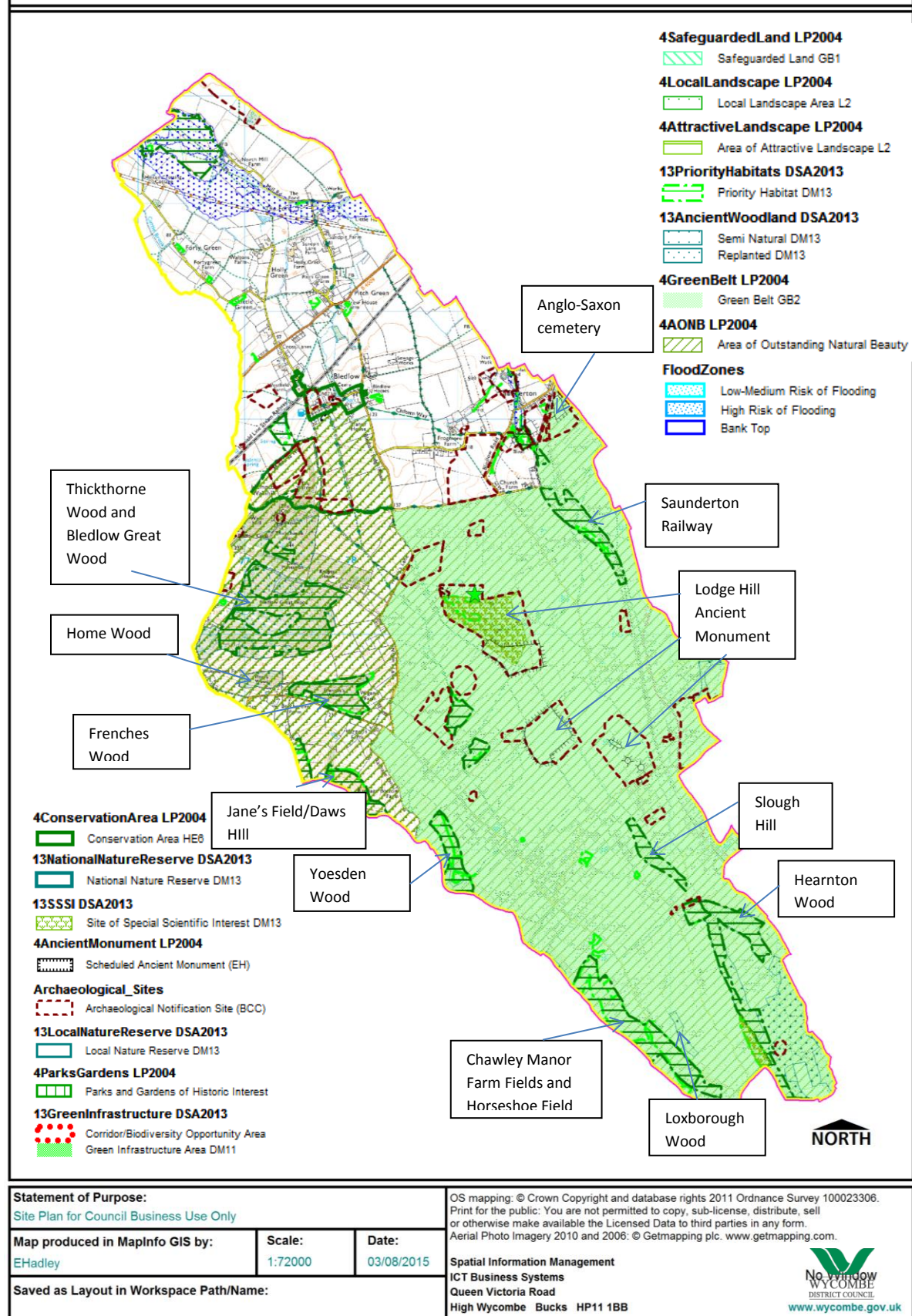
Frequency:

- 1 train per hour to London Marylebone, calling at High Wycombe, Beaconsfield and Gerrards Cross, taking 44 minutes.
- 1 train per hour to Princes Risborough, taking 9 minutes
- This journey is extended to Bicester North every two hours, calling at Haddenham and Thame Parkway, taking 30 minutes

³² Based on Network Rail ticket sales of passengers with journey starting or terminating at Saunderton. Full document can be found [here](#).

Policies and Constraints

Below is a map of Bledlow-cum-Saunderton parish showing the planning policies and constraints in the parish. Planning policies relate to any policies from the Development Plan, and any constraints show circumstances which could affect any properties or surrounding areas, such as flooding, contamination, conservation or environmental factors.



Technical Appendices:

Sources:

In order to produce the statistics in this document, a variety of data sources have been used:

- **ONS Census Data:** Various data sources from the Census, where possible the most up to date (2011) data has been used.
- **ONS mid-year Population estimates:** These have been used to estimate population changes each year. These have only been published at ward level, rather than parish.
- **Internal Monitoring:** Monitoring of residential and employment development by WDC and Bucks CC, see the Annual Monitoring Report for more information.

Landmark Historical Maps: Use of 19th and 20th century National and County maps to determine changes in parish and ward. These maps are reproduced from Ordnance Survey material with the permission of Ordnance Survey on behalf of the controller of Her Majesty's Stationery Office. © Crown Copyright and Landmark Information Group Ltd. Unauthorised reproduction infringes Crown copyright and may lead to prosecution or civil proceedings. Wycombe District Council. Licence LA 086207 2003.

Development history - Residential

Table 8: Completed Residential schemes

Reference	Development Type	Address	Proposal	No. of Units	Completion date
00/07359/FUL	CONVERSION	THE PAPER MILL, NORTH MILL ROAD	CONVERSION OF OUTBUILDINGS TO 4 HOUSES	4	16-Aug-04
01/06609/FUL	DEMOLITION/NEW	LOVELSTONE ROUTS GREEN, BLEDLOW RIDGE	DEMOLITION & ERECTION 1 DWELLING	1	30-Mar-03
01/06745/FUL	DEMOLITION/NEW	DRUMBLAYNE HOUSE (MAES GOWER), BLEDLOW ROAD, SAUNDERTON	DEMOLITION & ERECTION ONE DWELLING	1	30-Mar-03
01/06912/FUL	DEMOLITION/NEW	"DRUELS COTTAGE" CHINNOR ROAD BLEDLOW RIDGE	DEMOLITION & ERECTION 1 DWELLING	1	30-Mar-07
02/05020/FUL	NEW	WHITEGATES, ODDLEY LANE	DEMOLITION & ERECTION 1 DWELLING	1	19-Mar-03
02/05684/FUL	CONVERSION	FROGMORE	CONVERSION OF 2	2	30-Mar-05

		FARM, ODDLEY LANE, SAUNDERTON	FARM BUILDINGS TO 2 DWELLINGS		
02/05855/FUL	DEMOLITION/NEW	THE OLD THREE CROWNS, CHINNOR ROAD	DEMOLITION & ERECTION 2 DWELLINGS	2	30-Mar-03
02/07188/FUL	DEMOLITION/NEW	THE POULTRY YARD, HOLLY GREEN LANE, SKITTLE GREEN, BLEDLOW	PAIR TRADITIONAL CONSTRUCTION SEMI DETACHED COTTAGES	2	30-Mar-07
04/05311/FUL	DEMOLITION/NEW	The White Bungalow, Wycombe Road, Saunderton	Redevelopment to provide 9 x 2 bed, 4 x 3 bed terraced houses & 2 x 2 bed flats	15	21-Oct-05
04/05492/FUL	CONVERSION	PIGGERY AT SHIMMELLS FARM, WIGANS LANE, BLEDLOW RIDGE	Conversion of existing piggery to form 2 bed dwelling	1	30-Mar-06
04/07034/FUL	CONVERSION	barn at Brew House Farm Perry Lane Bledlow	Part demolition of dutch barn & construction of extension and conversion of barn to form one 3 bed dwelling	1	30-Mar-07
04/07853/FUL	DEMOLITION/NEW	Violet Cottage Chapel Lane Bledlow	Demolition of existing dwelling and erection of 1 no x 5 bed replacement dwelling	1	24-Nov-06
04/07972/FUL	NEW	OS Parcel 3765 West Lane Bledlow	Erection of 2 no x 2 bed & 3 no x 3 bed dwellings	5	09-Mar-06
04/08183/FUL	DEMOLITION/NEW	Half Hidden West Lane Bledlow	Demolition of existing dwelling and erection of 1 no. x 5 bed a detached dwelling	1	30-Mar-07
04/08335/FUL	NEW	Lee Road Nurseries Lee Road Saunderton	Siting of a mobile home for agricultural worker	1	30-Mar-06
05/05591/FUL	DEMOLITION/NEW	Cornerway Chinnor Road Bledlow Ridge	Demolition of existing dwelling & erection of new 4-bed dwelling	1	30-Mar-08
05/07311/FUL	DEMOLITION/NEW	Bernwood Oddley Lane Saunderton	Demolition of existing dwelling & erection of detached	1	17-Oct-06

			5 bed dwelling		
05/07783/FUL	DEMOLITION/NEW	39 Haw Lane Bledlow Ridge	Demolition of existing bungalow and construction of 2 storey 3 bed detached chalet style house	1	30-Mar-09
06/05288/FUL	CHANGE OF USE	Morlands Farm Chinnor Road Bledlow Ridge	Alterations to existing barn/outbuilding and conversion to form studio and 3-bed guest accommodation	2	30/03/2009
06/06488/FUL	DEMOLITION/NEW	Norcar Routs Green Bledlow Ridge	Erection of 1 x 4-bed detached dwelling following demolition of existing dwelling	1	30-Mar-08
06/06629/FUL	DEMOLITION/NEW	The Bungalow Holly Green Lane Bledlow	Demolition of existing bungalow and erection of new 4 bed dwelling	1	09-Aug-07
06/07568/FUL	DEMOLITION/NEW	Bird And Tole Ltd Chinnor Road Bledlow Ridge	Demolition of existing B1 buildings & erection of 1 x 4-bed detached dwelling, 1 x 4-bed semi detached house & 1 x 3-bed semi detached house, 2 x 3-bed semis	5	22-Nov-11
07/05300/FUL	RESIDENTIAL CONVERSION	Mill House Perry Lane Bledlow	Erection of two storey rear, single storey side and single storey front extensions to Mill House, conversion of barn to form 1 no. x 3-bed dwelling, erection of 2 no. x detached outbuildings	1	06-Aug-08
07/05895/FUL	RESIDENTIAL CONVERSION	Frogmore Farm Oddley Lane Saunderton	Demolition of redundant agricultural buildings, extension and conversion of barn 1 to form one x 4-bed dwelling, conversion of barn 2 to form two x 3-bed	3	30-Mar-13

			dwellings		
07/06485/FUL	DEMOLITION/NEW	11 Haw Lane Bledlow Ridge	Erection of detached 4-bed three storey dwelling	1	30-Mar-09
07/07500/FUL	DEMOLITION/NEW	Harpers Cottage Chinnor Road Bledlow Ridge	Demolition of existing dwelling & shed, erection of 1 4-bed detached dwelling	1	30-Mar-11
07/07951/FUL	DEMOLITION/NEW	The Post Office Stores Chinnor Road Bledlow	Erection of detached 4-bed dwelling with detached outbuilding	1	30-Mar-09
08/05205/FUL	DEMOLITION/NEW	Highlands Hill Top Lane Chinnor	Erection of 1 x 5-bed detached dwelling, detached triple garage & ancillary accommodation & stable block	2	30-Mar-12
09/05065/FUL	DEMOLITION/NEW	Windermere Chinnor Road Bledlow Ridge	Demolition of existing bungalow and two detached garages and erection of 1 x 4 bed chalet bungalow	1	22-Jan-10
09/05157/FUL	RESIDENTIAL CONVERSION	Eversden Court Chinnor Road Bledlow Ridge	SINGLE STOREY SIDE EXTENSION AND ALTERATIONS TO ENABLE PHYSICAL SEPARATION OF DWELLING	1	18-Jun-10
09/07122/FUL	CHANGE OF USE	The Old Station Sandpit Lane Bledlow	Change of use from bed and breakfast to 1 x 3 bed dwelling	2	30-Mar-11
09/07216/FUL	NEW	Land Adjacent 9 Haw Lane Bledlow Ridge	Erection of 1 x 3 bed dwelling	1	30-Mar-10
09/07387/FUL	DEMOLITION/NEW	Ridge Service Station, Chinnor Road, Bledlow Ridge	Proposed demolition of existing buildings & flat. Erection of 1 x detached 3 bed dwelling and 3 x terraced brick and flint cottages	4	23-Sep-13
10/07121/FUL	DEMOLITION/NEW	Hunters Gate Deanfield Saunderton	Demolition of existing dwelling and outbuilding and erection of 1 x 3 bed dwelling with annexe	1	30-Mar-15
12/05822/FUL	DEMOLITION/NEW	Pentewal Shootacre Lane	Proposed replacement 4 bed	1	01-Oct-14

		Princes Risborough	house		
--	--	-----------------------	-------	--	--

Table 9: Residential schemes under construction as of 01/04/2015

Reference	Development Type	Address	Proposal	No. of Units	Construction start date
06/05875/ FUL	Demolition/ New	Bledlow Homes Bledlow Ridge Road Bledlow Bucks	Demolition of Jasmine House, Aylesbury House, toilet blocks to main building and existing outbuildings and conversion and extension of main building of former children's home to form 2no x 3 bed and 2 no x 4 bed residential units; Erection of 2 no x 4 bedroom dwellings	7	21/12/2012
07/07588/ FUL	New	Hawthorns Church Lane Bledlow Ridge Bucks	Erection of 2-bed detached dwelling and garage with shared access	1	12/07/2010
08/05868/ FUL	Demolition/ New	Badgers View Red Lane Chinnor Bucks	Demolition of existing dwelling & annex & erection of two storey detached dwelling with integral garage	1	25/07/2013
10/07190/ FUL	Demolition/ New	Upper East Shootacre Lane Princes Risborough Bucks	Demolition of existing dwelling and erection of replacement 4 bed dwelling with basement and associated parking.	1	11/05/2012
11/07495/ FUL	Change of Use	Land North Of Bridgefields Upper Icknield Way Saunderton Bucks	Change of use from small holding and conversion of Barn A to form a 2-bed dwelling with the conversion of Barn B to a garage/workshop together with the demolition of all other existing buildings, structures	1	28/06/2012

			and hardstanding		
12/05578/ FUL	Change of Use	Studmore Farm Chinnor Road Bledlow Ridge Bucks	Creation of rooms in roofspace, raising of roof & alterations to existing barn to facilitate conversion to 1 x 4 bed dwelling with study	1	01/05/2014
12/06682/ FUL	Change of Use	Home Farm Lee Road Saunderton Bucks	Conversion and extension of an existing two storey redundant barn to form a single 4 bed dwelling house and the erection of a detached garage/store	1	09/01/2014
12/07404/ FUL	Demolition/ New	Cutlers Orchard Perry Lane Bledlow Bucks	Erection of replacement dwelling to front with associated detached garage and erection of 2 x 5 bed detached dwellings each with detached double garages	2	25/06/2014
13/06874/ FUL	Change of Use	Bledlow Methodist Church Chapel Lane Bledlow Bucks	Change of use and conversion of former Methodist Chapel to one dwelling including provision of parking	1	14/11/2013
13/08104/ FUL	Change of Use	The Chiltern Hotel Wycombe Road Saunderton Bucks	Change of use from Hotel to residential dwelling	1	19/06/2014
14/05098/ FUL	New	Ridge Farm Upper Icknield Way Saunderton Buck	Erection of detached 3-bed Agricultural Workers dwelling with associated car parking	1	13/11/2014

Table 10: Unimplemented residential schemes as of 01/04/2015

Reference	Development Type	Address	Proposal	No. of Units
07/05393/OUT	New	Land Adj To Medeway Shootacre Lane Princes Risborough Bucks	Outline application for the erection of 1 no. x 3-bed detached dwelling & creation of new access with all matters being reserved	1

13/05316/FUL	Change of Use	The Barn At Manor Farm Lee Road Saunderton Bucks	Conversion of barn to 1 bed dwelling with single storey side extension and installation of Klargest Bio Disc Unit and erection of a detached garage/store.	1
13/07130/FUL	Demolition/New	Warren Cottage Upper Icknield Way Bledlow Bucks	Proposed demolition of existing dwelling and erection of one 4 bed dwelling and detached garage/home office	1
14/05870/FUL	New	West Yard Industrial Estate Slough Lane Saunderton Bucks	Redevelopment of site comprising demolition of existing buildings and erection of 42 dwellings with vehicular and pedestrian access onto Slough Lane, public open space, play space, on-site car parking and landscaping.	42
14/06655/FUL	Change of Use	Princes Risborough Golf Club Lee Road Saunderton Bucks	Conversion of first floor offices and meeting room to provide two self contained staff flats. Insertion of door to lounge 1 and extension of external patio area and steps.	2

Development history - Employment

Table 11: Completed Employment schemes

Reference	Development Type	Address	Proposal	Floorspace gained/lost	Completion date
97/06028/FUL	Extension	Risborough Turfcare Supplies Ltd, Chinnor Road	Extension to existing storage unit	N/A	31-Mar-99
00/06009/FUL	Change Of Use	Wigans Farm, Wigans Lane, Bledlow Ridge	Conversion of barn and office to form dwelling	-27m2 (B1a) - 220m2 (SG)	29-Mar-02

00/06106/FUL	Change Of Use	Maylyn, Chinnor Road, Routs Green, Bledlow Ridge	Cou from agricultural land to wildlife observation area	+10m2 (SG)	30-Mar-03
00/07359/FUL	Demolition/New	The Paper Mill, North Mill Road	Conversion of outbuildings to 4 dwellings	-870m2 (B2)	16-Aug-05
00/07782/FUL	Demolish/New	Holly Green Farm, Bledlow, Princes Risborough	Replace and extend existing cow housing	+1,242m2 (SG)	30-Mar-05
01/06434/FUL	Change Of Use	Forty Green Farm, Bledlow	Change of use from agriculture to business use	-386m2 (SG) +295m2 (B1a)	17-Oct-03
04/05492/FUL	Change Of Use	Piggery, Shimmells Farm, Wigans Lane	Conversion of existing piggery to form a 1-bed dwelling	-57m2 (SG)	30-Mar-06
04/05311/FUL	Demolition/New	Wycombe Car Body Repair Centre, Wycombe Road	Demolish existing workshops/offices, erect 15 dwellings	-437m2 (B1a) -877m2 (B2)	21-Oct-05
02/05684/FUL	Change Of Use	Frogmore Farm, Oddley Lane	Conversion of two redundant agricultural buildings to form three dwellings	-484m2 (SG)	30-Mar-05
02/00772/OTHFP	Extension	Bledlow Ridge County Combined School, Church Lane	Single storey infill extension to form corridor & itc suite	+53m2 (D1)	30-Mar-03
01/05577/FUL	Extension	Bledlow Village Hall, Chinnor Road	Extension to village hall	+23m2 (D1)	21-Jan-03
02/07273/FUL	Extension	The Meadows Cattery Bledlow Ridge High Wycombe	Erection of 12 cattery chalets	+72m2 (SG)	30-Mar-03

02/07738/FUL	New	Land Adjacent Jannock Cottage, Chinnor Road, Bledlow	Erection of detached barn	+162m2 (SG)	30-Mar-03
03/05672/FUL	Change Of Use	Manor Farm, Church End, Bledlow	Conversion of existing barn to provide office accommodation	-128m2 (SG), +88m2 (B1a)	30-Mar-05
04/07034/FUL	Change Of Use	Brew House Farm Perry Lane Bledlow	Part demolition of dutch barn & construction of extension to conversion of barn to 3 bed dwelling	-223m2 (SG)	30-Mar-06
05/05569/FUL	Extension	The Grange Wycombe Road Saunderton	Construction of single storey rear extension	+114m2 (B8)	30-Mar-06
05/06087/FUL	New	Land Adjacent Long Orchard Upper Icknield Way Saunderton	Erection of agricultural implement store	+56m2 (SG)	30-Mar-06
05/05973/FUL	New	OS Parcel 5642 Chinnor Road Bledlow Ridge	Erection of hay barn/implement store	+170m2 (SG)	30-Mar-08
05/06381/FUL	Change Of Use	Woodlands Farm Red Lane Chinnor	Retention of existing barns for storage of plant and machinery	+488m2 (B8) -488m2 (SG)	17/10/2005
05/06407/AGI	New	Hinton Crossing Cottage Forty Green Bledlow	Erection of steel framed hay barn	+446m2 (SG)	30-Mar-08
05/06886/FUL	New	Rear Of Brambles Skittle Green Bledlow	Erection of agricultural tractor store/barn	+30m2 (SG)	30-Mar-06
05/07364/FUL	Extension	Luxton Nurseries	Erection of a packing and storage	+120m2 (SG)	30-Mar-08

		Lee Road Saunderton	shed for plants		
06/05257/FUL	Change Of Use	Hillview Farm Chinnor Road Bledlow Ridge	GARAGE conversion to form habitable accommodation and conversion of barn	-114m2 (SG)	30-Mar-09
06/05288/FUL	Change Of Use	Morlands Farm Chinnor Road Bledlow Ridge	Alterations to existing barn/outbuilding and conversion to form studio and 3- bed guest accommodation	-220m2 (SG)	30-Mar-09
06/06891/FUL	New	OS Parcel 0552 (RIDGE FARM) Upper Icknield Way Saunderton	Erection of one hay/machinery shed	+372m2 (SG)	30-Mar-07
06/07568/FUL	Demolition/New	Bird And Tole Ltd Chinnor Road Bledlow Ridge	Demolition of existing B1 buildings	-880m2 (B1c)	15-Apr-11
06/07905/CLE	Change Of Use	The Old Post Office Chinnor Road Bledlow Ridge	Certificate of Lawfulness for the continued use of the former post office as part of residential dwelling	-25m2 (A1)	17-Jan-07
07/06839/FUL	Change Of Use	Mill House Perry Lane Bledlow	Extension, conversion of barn to form 1 no. x 3- bed dwelling, erection of 2 no. x detached outbuildings	-163m2 (SG)	06-Aug-08
07/06912/FUL	Extension	The Grange Wycombe Road Saunderton	Construction of extension to include new external exercise runs and alterations to Building 5	+77m2 (SG)	30-Mar-09
07/06374/FUL	Extension	Corham Stables Sandpit Lane	N/A	+48m2 (SG)	30-Mar-09

		Bledlow			
07/07180/FUL	Extension	Mill House Perry Lane Bledlow	Construction of an agricultural building for storage of tractor and farm machinery	+96m2 (SG)	30-Mar-09
07/07996/AGI	Extension	OS Parcel 5000 Pound Farm Lee Road Saunderton	Erection of crop storage building	+450m2 (SG)	30-Mar-09
07/07541/FUL	Extension	Darusso Chinnor Road Bledlow Ridge	Erection of new entrance porch and single storey front extension	+52m2 (A3)	30-Mar-09
08/05316/FUL	Extension	Bledlow Ridge County Combined School Church Lane Bledlow Ridge	Construction of extension and proposed new classroom	+66m2 (D1)	30-Mar-11
08/06988/FUL	Change Of Use	Slough Bottom Farm Slough Lane Saunderton	Conversion of existing barn to music room	-52m2 (SG)	30-Mar-10
08/06533/PARTN R	Extension	Bledlow Household Waste and Recycling Centre, Wigans Lane, Bledlow Ridge	Modular building including office and shower	+10m2 (SG)	30-Mar-09
09/05582/FUL	Demolition/New /C Of U	OS Parcel 3462 West Lane Bledlow	Construction of two replacement buildings following demolition and change of use from agricultural to B1c	+5m2 (SG)	30-Mar-11
07/04712/IN	Mezzanine	3 Ministry Wharf, Wycombe Road	MEZZANINE	+30m2 (B1c)	02-Sep-08

11/05742/FUL	Change Of Use	Unit 2 And 3 Former Turner Groundscar e Chinnor Road Bledlow	Use of units 2 and 3 for repair, servicing and MOT testing of cars and light commercial vehicles (B2)	0m2 (B2)	30-Mar-12
09/07122/FUL	Change Of Use	The Old Station Sandpit Lane Bledlow	Change of use from bed and breakfast to 1 x 3 bed dwelling	-103m2 (C1)	30-Mar-11
09/07387/FUL	Demolition/New	Ridge Service Station, Chinnor Road, Bledlow Ridge	Proposed demolition of existing garage workshop, showroom, first floor offices & flat.	-444m2 (B2)	30-Mar-12

Table 12: Employment schemes under construction as of 01/04/2015

Reference	Development Type	Address	Proposal	Floorspace gained/lost	Construction start date
08/05868/FUL	Change of Use/Demolition	Badgers View Red Lane Chinnor	Part demolition and part conversion of existing storage building to form 1 no x 1 bed accommodation to be used ancillary to dwelling.	-48m2 (B2) -49m2 (B8)	25/07/2013
06/05875/FUL	Demolition/New	Bledlow Homes Bledlow Ridge Road Bledlow Bucks	Demolition of Jasmine House, Aylesbury House and extension of main building of former children's home to form 2no x 3 bed and 2 no x 4 bed residential units; Erection of 2 no x dwellings	-2,327m2 (C2)	21/12/2012
13/06874/FUL	Change of Use	Bledlow Methodist Church Chapel Lane Bledlow	Conversion of existing methodist church into 1 x 3 bed dwelling	-128m2 (D1)	14/11/2013

		Bucks	with associated alterations		
11/07946/FUL	Extension	Bledlow Cricket Club West Lane Bledlow Bucks	Erection of single storey extension and associated internal and external alterations	+51m2 (D2)	18/02/2015
13/08104/FUL	Change of Use	The Chiltern Hotel Wycombe Road Saunderton Bucks	Change of use from Hotel to residential dwelling	-850m2 (C1)	19/06/2014

Table 13: Unimplemented employment schemes as of 01/04/2015

Reference	Development Type	Address	Proposal	Floorspace gained/lost
12/07440/FUL	Change of Use	Dean Valley Nursery Deanfield Saunderton Bucks	Change of use of part of a redundant horticultural landholding for the siting of 4 yurts for short term holiday accommodation and conversion of an existing barn to provide ancillary guest services	+200m2 (SuiGeneris)
13/05316/FUL	Change of Use	The Barn At Manor Farm Lee Road Saunderton Bucks	Conversion of barn to 1 bed dwelling with single storey side extension and installation of Klargestor Bio Disc Unit and erection of a detached garage/store	-118m2 (SuiGeneris)
14/06308/PAM	Change of Use	Shed Opposite Frenches Wood Chinnor Road Chinnor Bucks	Prior notification application (Class M) for change of use of existing agricultural building to Class B1 (business)	-164m2 (SuiGeneris), +164m2 (B1)
14/06103/FUL	Change of Use	Fargaze Lee Road Saunderton Bucks	Change of use from commercial and residential to residential only	-232m2 (SuiGeneris)
14/06655/FUL	Change of Use	Princes Risborough Golf Club Lee Road Saunderton Bucks	Conversion of first floor offices and meeting room to provide two self contained staff flats. Insertion of door to lounge 1 and extension of external patio area and steps. Insertion of ground floor fire door	-100m2 (B1a)
14/07193/FUL	New	Land North Of	Erection of agricultural	+439m2

		Cuttle Brook Meadows Skittle Green Bledlow Bucks	barn for the housing of livestock and the storage of hay/straw and silage	(SuiGeneris)
15/05096/FUL	New	Holly Green Farm Sandpit Lane Bledlow Bucks	Erection of new building for storage of combined crops, straw and cattle	+1,042m2 (SuiGeneris)
14/05870/FUL	Demolition	West Yard Industrial Estate Slough Lane Saunderton Bucks	Redevelopment of site comprising demolition of existing buildings and erection of 42 dwellings with vehicular and pedestrian access onto Slough Lane, public open space, playspace, on-site car parking and landscaping.	-2,860m2 (Mixed B use)

Demographic:

Table 13: Population change 1981-2013 in Bledlow and Bradenham (Ward)

Year	All Persons	Men	Women	15-64 years	%Men	%Women
1981	2123					
1991	2635	1309	1326	1823	49.68%	50.32%
1996	3051	1540	1511	2062	50.48%	49.52%
2000	2850	1542	1469.5	2069	54.11%	51.56%
2001	2971	1555.5	1428	2076	52.36%	48.06%
2002	3016	1569	1447	2126	52.02%	47.98%
2003	3075	1609	1466	2142	52.33%	47.67%
2004	2999	1573	1426	2089	52.45%	47.55%
2005	3030	1604	1426	2095	52.94%	47.06%
2006	3101	1648	1453	2144	53.14%	46.86%
2007	3191	1702	1489	2188	53.34%	46.66%
2008	3166	1684	1482	2159	53.19%	46.81%
2009	3174	1694	1480	2156	53.37%	46.63%
2010	3184	1685	1499	2140	52.92%	47.08%
2011	3,149	1665	1484	2135	52.87%	47.13%
2012	3,183	1686	1497	2138	52.97%	47.03%
2013				2038		

Census Based	Mid-Year Estimates	Local Survey
--------------	--------------------	--------------